

# Covid-19 Local Employer Data

A short report looking at employer demand in your area during the current crisis.



## Sussex

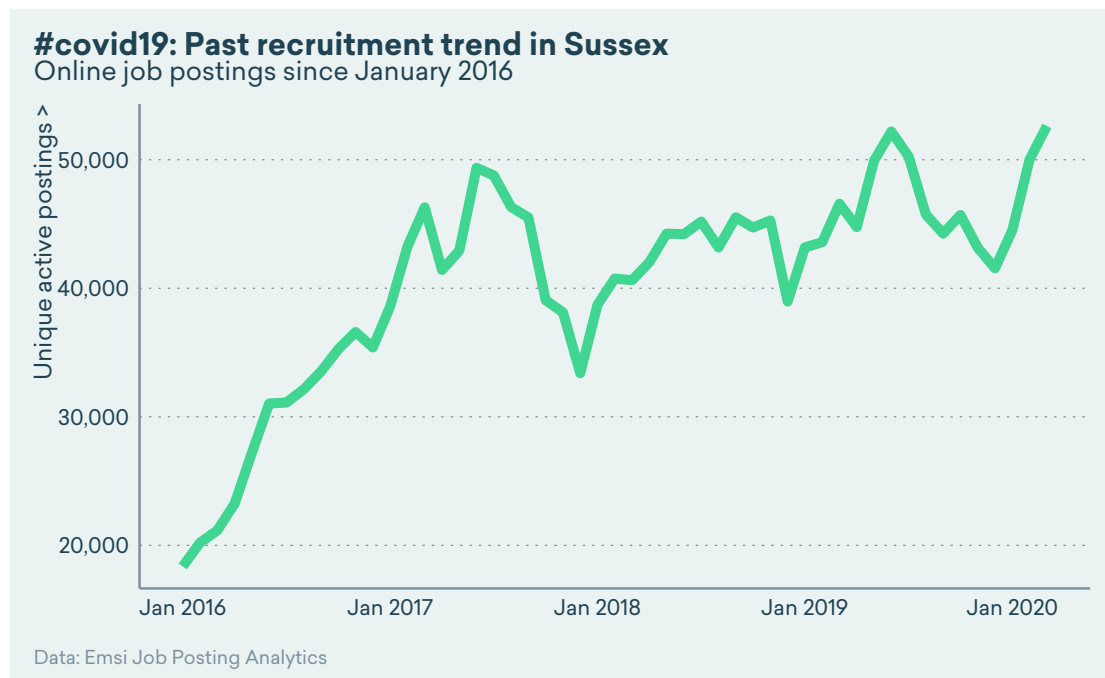


06 April 2020

This summary report draws on Emsi's Job Postings Analytics daily trends in the Sussex region. Emsi collate, deduplicate and categorise online job posting activity on a daily basis to build a picture of hiring activity to bring near-real time context to your understanding of local labour market dynamics – particularly important at times like this, as you try to manage your response to the Covid-19 crisis. You can find out more about Emsi data at <https://www.economicmodelling.co.uk/data/>

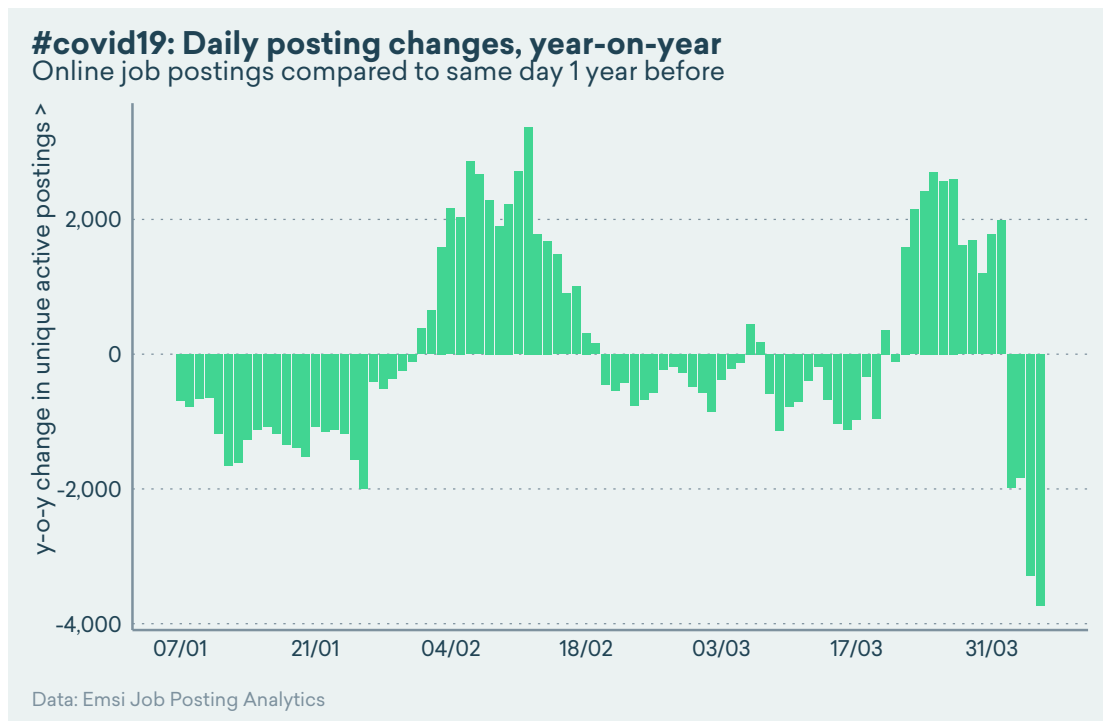
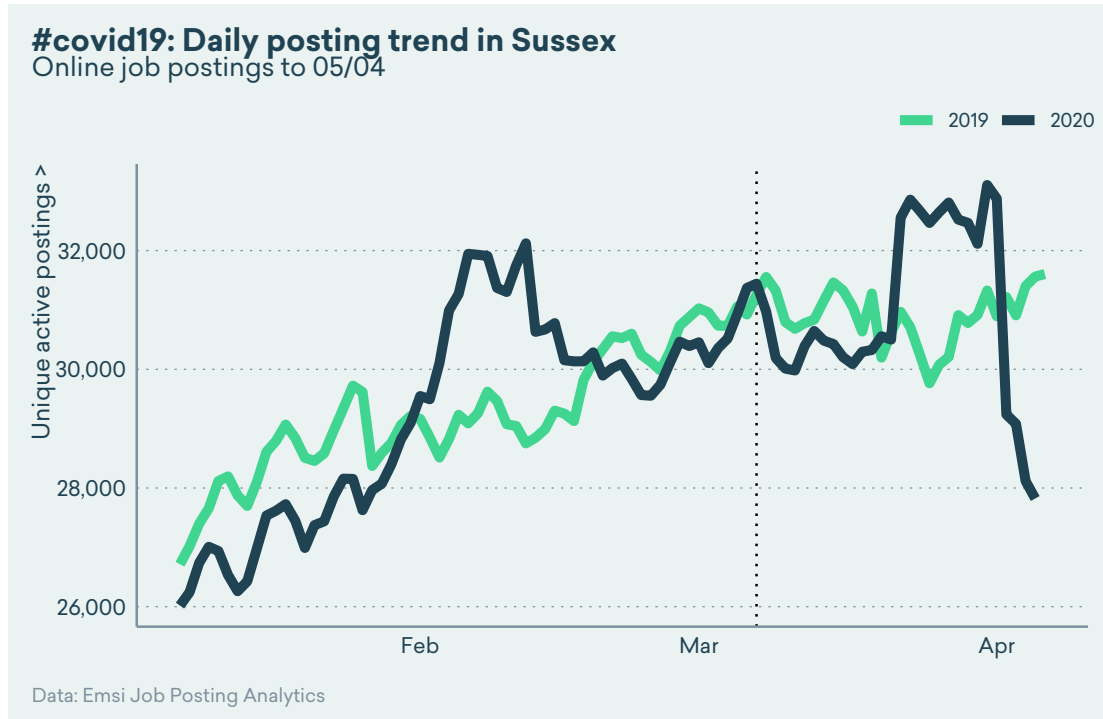
### 1 MONTHLY POSTING TREND FOR YOUR REGION

In this chart, we provide some initial context for your region's recruitment demand, looking at the number of online job postings.



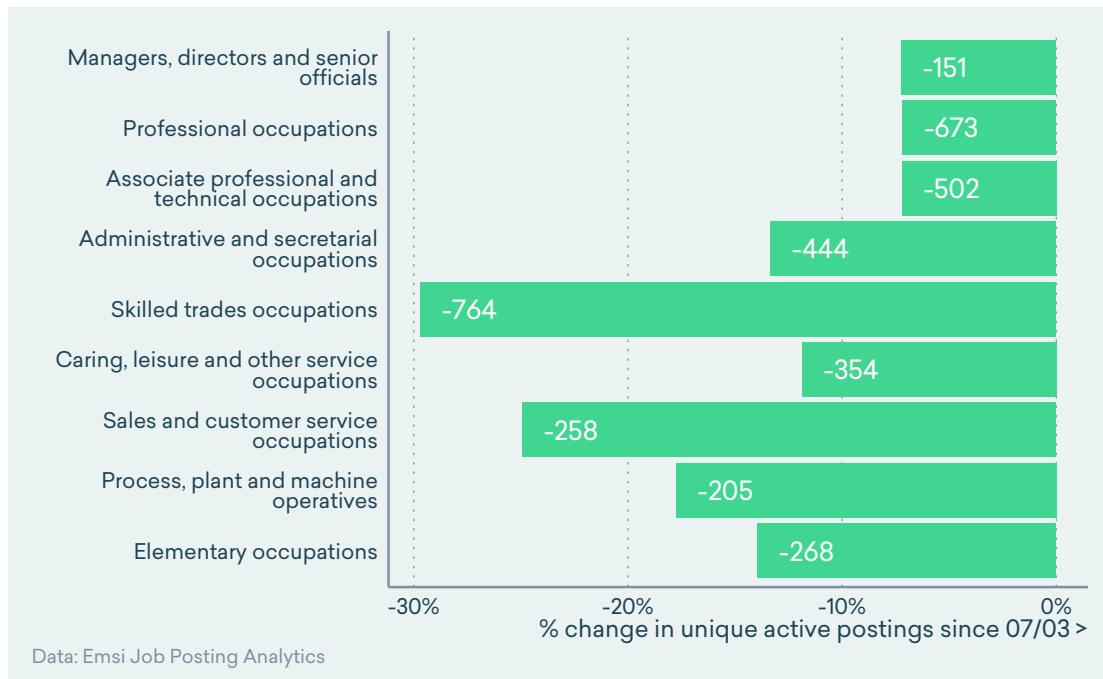
## 2 LAST 90 DAYS' POSTING ACTIVITY

These charts map daily posting activity in the last 90 days, comparing 2020 with the same period in 2019. Since 7th March, around the time that social distancing measures came into active discussion, unique active postings have fallen by 3,619, or 11.5 per cent.

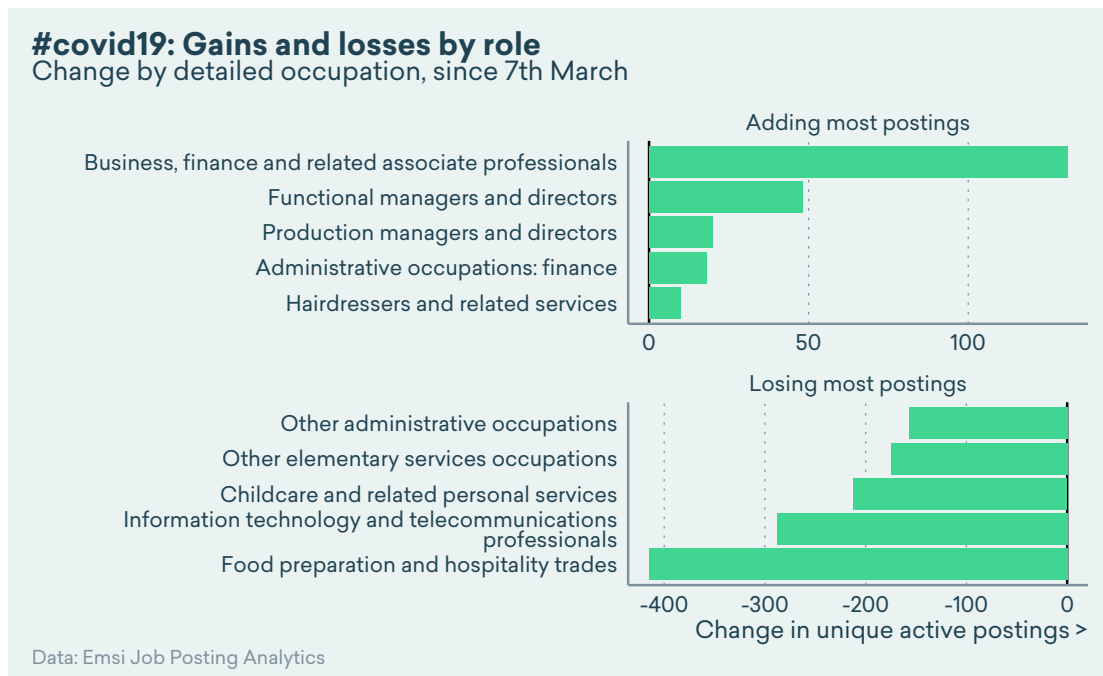


### 3 OCCUPATIONS: CHANGE SINCE 7TH MARCH

The first chart looks at the change in job posting levels for each of the 9 major occupational groups in the ONS' Standard Occupation Classification.



The last chart shows the biggest changes at a more detailed level of the Standard Occupation Classification, with the largest increases and largest decreases in postings since 7th March.



## 4 FIND OUT MORE

This report was produced on 06 April 2020 and covers the following local authorities: Brighton and Hove, Eastbourne, Hastings, Lewes, Rother, Wealden, Adur, Arun, Chichester, Crawley, Horsham, Mid Sussex, Worthing.

Our mission at Emsi is to help organisations and individuals make better, more informed decisions about the labour market through access to timely, granular and action-oriented labour market data. Never has this mission been so critical as this current period of rapid, short-term change in the labour market as we respond to the COVID-19 crisis.

We are publishing regular, helpful content as we observe emerging labour market trends during this period. Be sure to check out the Emsi blog for the latest insight: <https://www.economicmodelling.co.uk/blog/>. We have a number of commercial local labour market insight services that we offer to people working in the education, economic development and employment space, please contact us to find out more about how we can help you: <https://www.economicmodelling.co.uk/contact/>.