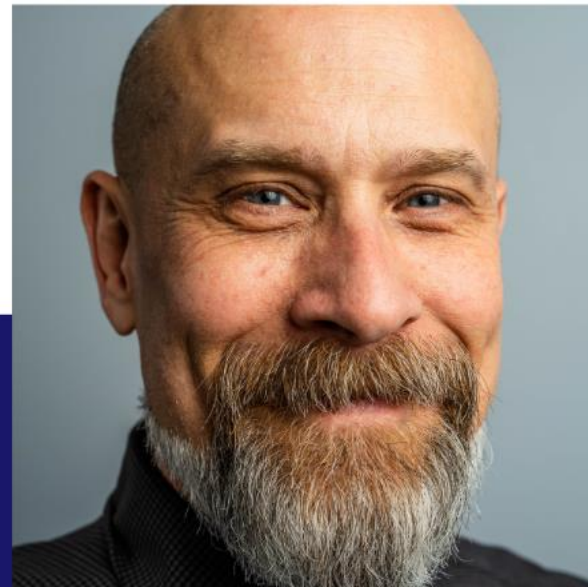


ESTAR

**Employability for Supported &
Temporary Accommodation & Refuges**





Bridging the gap between education & work

Wealden Works offer an opportunity for 40 young people aged 16-24 in the Wealden area each year, who do not benefit from contacts with the business world and other support networks, to take an important step on their personal journey into employment and contributing citizenship. Young people are given personal pastoral support that is tailored to their needs and supports them in reaching their goals. The programme runs over four mornings a week.

Who is it for?

Adults Aged 18 - 24

Area Covered?

Wealden District

Time?

4 mornings a week,
usually for 10 weeks

How to join?

[Open referral on website](#)

EXAMPLE PAGE

**SUPPORT
LEVEL**

All levels:
this programme
is tailored to
your needs

Our question to you...

Are there any issues you have come across amongst service users with housing issues?



Aims of the project

- Build the capacity of accommodation providers and the housing network to enable early interventions.
- Raise aspirations and support clients into employability training and paid or unpaid work.



The Project

Stage One: Research & mapping

- A survey for housing teams and housing providers
- A mapping of current pre-employment and employments support freely available in the county
- Joining key networks such as TAAG and housing officer team meetings ESHOG and District and Borough Teams.
- Determining how to collect data and track progress



The Project

Stage Two: Resources and tools

Brochure of employability programmes

Careers
EastSussex

Home ☆ Favourites Getting started Get in touch

Courses Apprenticeships Help & Guidance Events Login

*** Click here for the latest Coronavirus (COVID-19) Updates ***

Education is not preparation for life; education is life itself.

Adult Learning
[Adult Courses \(age 19+\)>](#)

Adult Skills & Jobs
[Information & Support>](#)

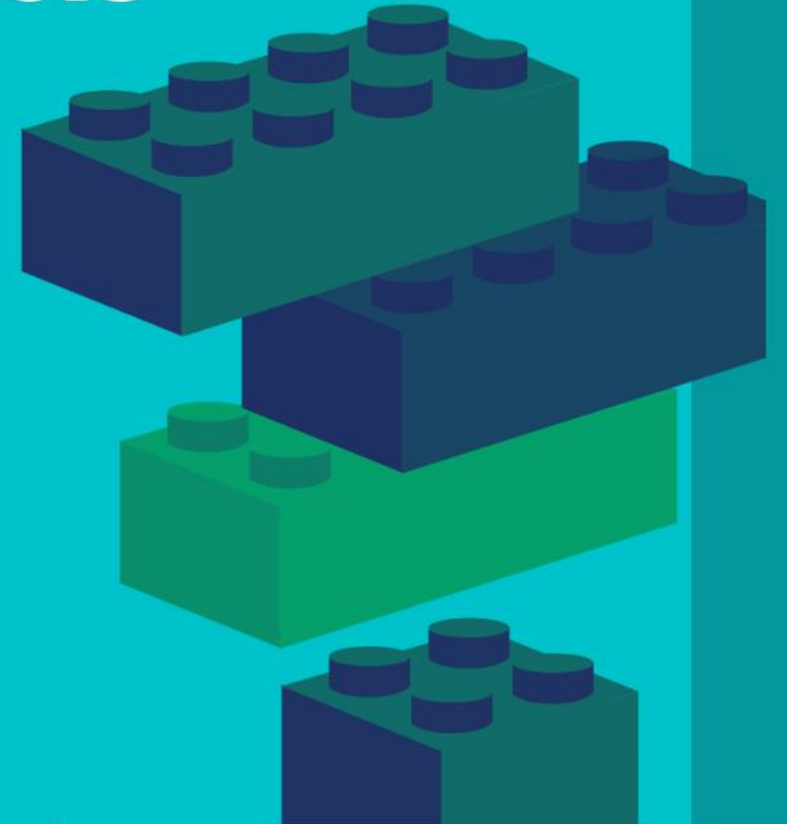
Full Time Courses
[Vocational and academic>](#)

Apprenticeships
[What's right for you?>](#)

The Project

Stage Two: Resources and tools

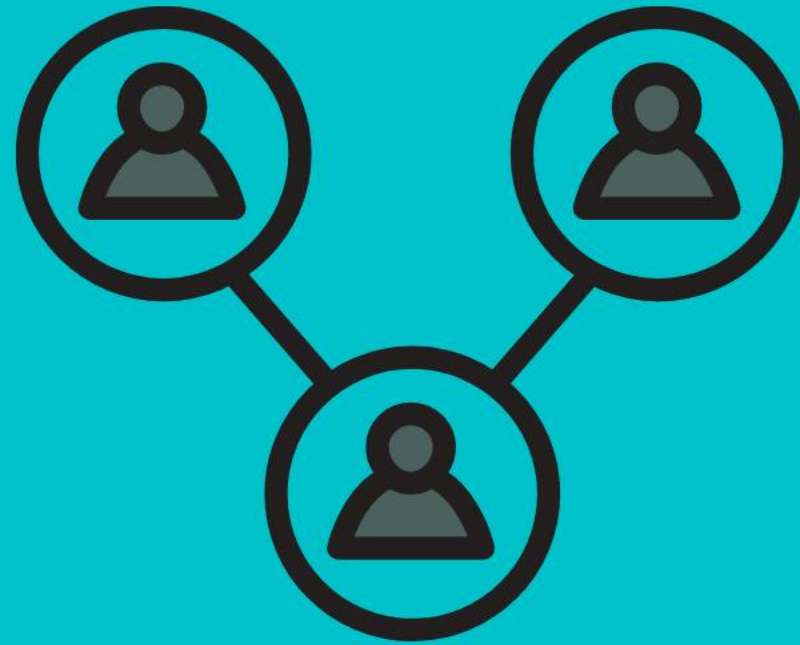
Modular Training programme



The Project

Stage Two: Resources and tools

Network Facilitation



The Project

Stage Two: Resources and tools

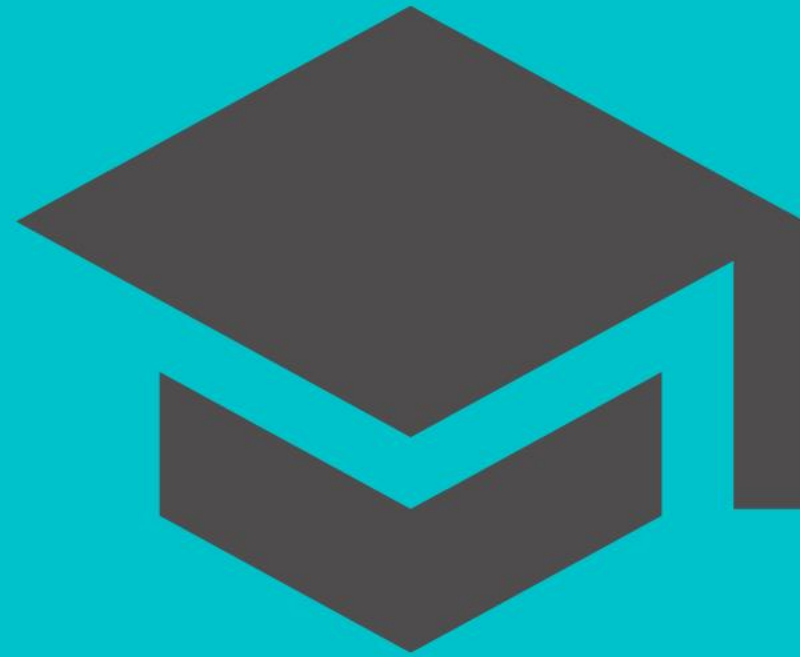
Creating referral pathways



The Project

Stage Two: Resources and tools

Commissioning or supporting
the creation of tailored
provision



The Project

Stage Two: Resources and tools

Ongoing delivery



Our question to you...

Are there any issues you have come across amongst service users with housing issues?

